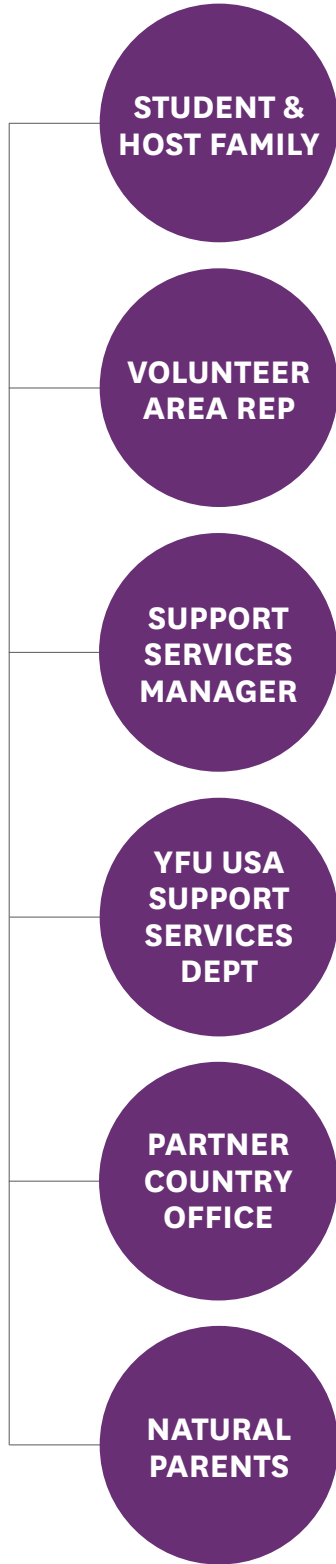




When students and host families require support, contacting those who are best equipped to help allows the YFU support structure to work most effectively.



### **Volunteer Area Representative (Area Rep)**

Name: \_\_\_\_\_

Phone: \_\_\_\_\_

Email: \_\_\_\_\_

Some areas also have a volunteer area coordinator who supports the area representatives.

### **Support Services Manager (SSM)**

Name: \_\_\_\_\_

Phone: \_\_\_\_\_

Email: \_\_\_\_\_

*Emergency Support: 800.424.3691*

### **Non-Support Matters**

Your YFU office provides help related to orientations, activities, and other non-support topics.

*Saginaw, MI Office: 1.866.493.8872*